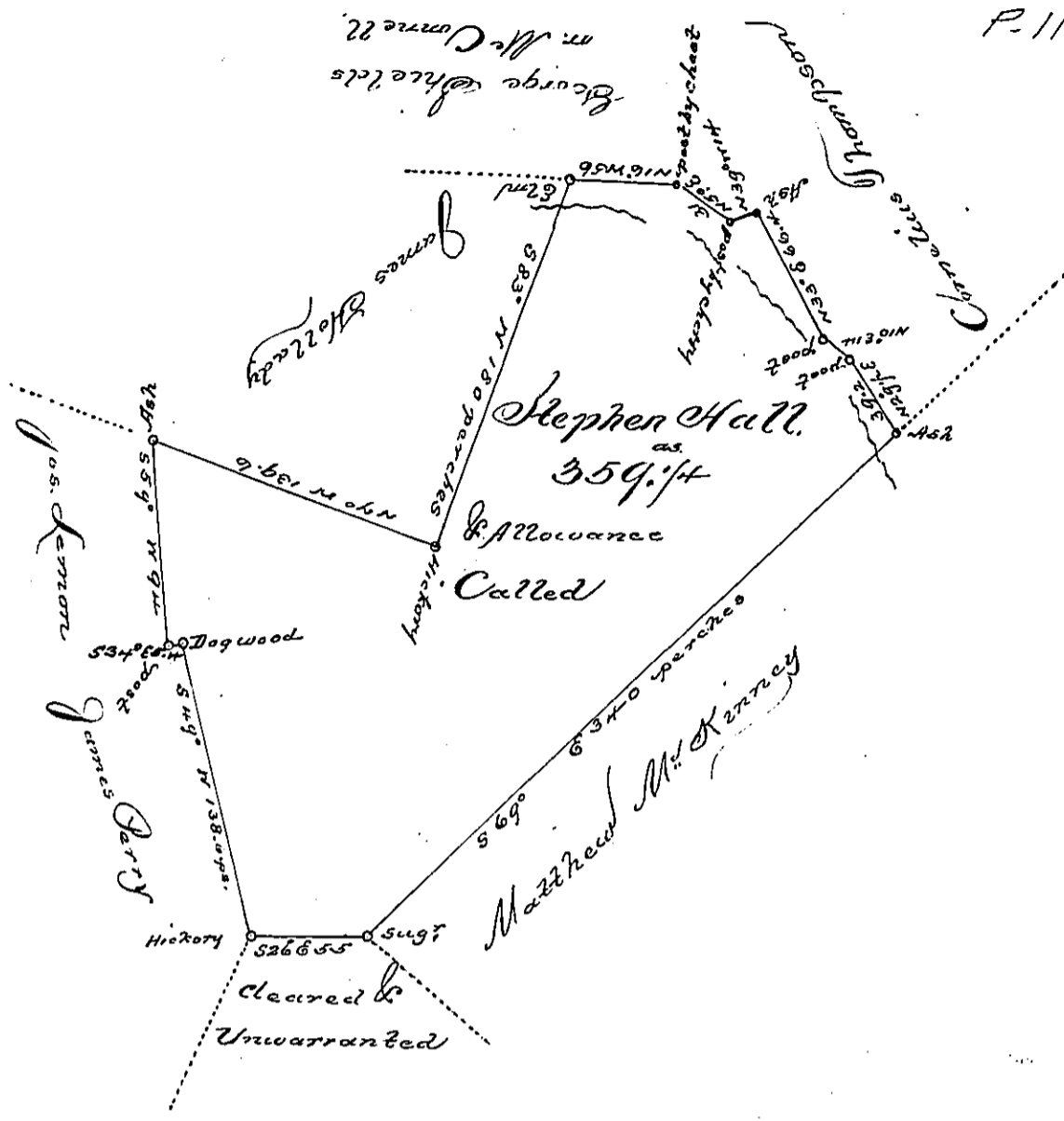


P-11-423



Situated, on the East side of the Monongahela River near the New Store on said River in Rostraver Township, ~~Franklin~~ ^{West} County & Surveyed the 16th day of June 1786. In pursuance of a warrant dated the 6th day of February 1786.

J. Alexander McLean Deputy,

John Lukens Esquire
Surveyor General

~~Note, this tract is disputed by Thomas Applegate who desires that patent may not issue until he has a hearing before the honorable board of property for the same~~

This caveat dismissed by Order of B. P. 2^d July 1787.

Jno Lukens, Esq:
S. G.

A. McLean

IN TESTIMONY that the above is a copy of the original remaining on file in the Department of Internal Affairs of Pennsylvania, made conformably to an Act of Assembly approved the 16th day of February, 1833, I have hereunto set my Hand and caused the Seal of said Department to be affixed at Harrisburg, this third day of September 1895

James W. Latta
Secretary of Internal Affairs.